



FileBank Quick Start Guide



Thank You!

Firstly, thank you for choosing to install FileBank! We hope that you will find it easy to use and useful to your daily activities, as we certainly do.

Pre-requisites

As you probably saw on our website, FileBank has been created using the latest technology to ensure it is as future proof as possible. The communications system is built on top of the .NET 3.5 Windows Communication Foundation. This means that you need .NET 3.5 installed on your computer. This in turn means that you need a computer capable of running .NET 3.5! Microsoft recommends the following system requirements:

System Requirements

- **Supported Operating Systems:** Windows Server 2003; Windows Server 2008; Windows Vista; Windows XP
- **Processor:** 400 MHz Pentium processor or equivalent (Minimum); 1GHz Pentium processor or equivalent (Recommended)
- **RAM:** 96 MB (Minimum); 256 MB (Recommended)
- **Hard Disk:** Up to 500 MB of available space may be required
- **CD or DVD Drive:** Not required
- **Display:** 800 x 600, 256 colors (Minimum); 1024 x 768 high color, 32-bit (Recommended)



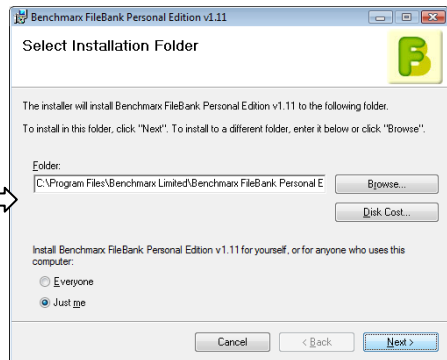
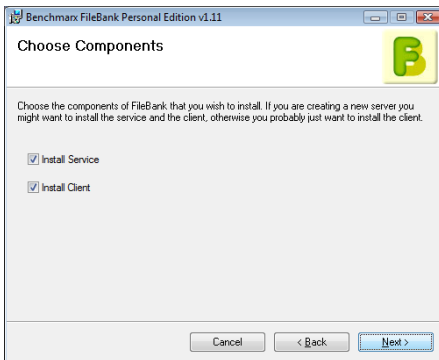
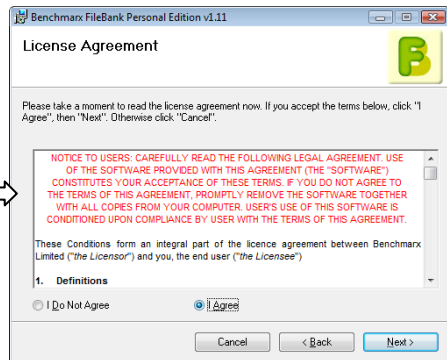
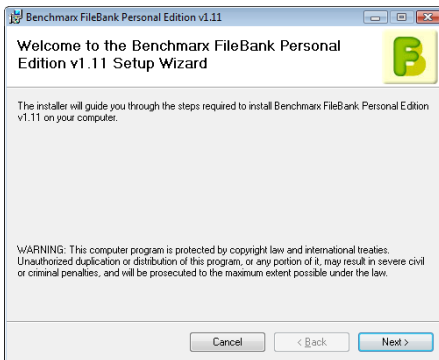
FileBank Quick Start Guide



Installation

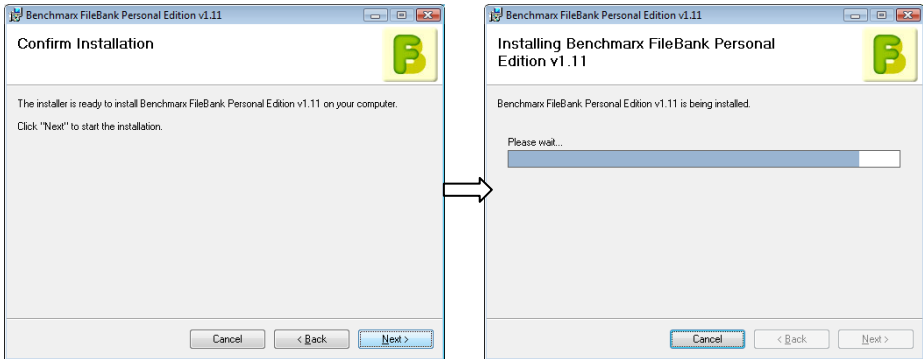
Before installing FileBank please ensure that you have removed any previous beta versions.

Now that you have downloaded FileBank you should be ready to install it. The installation follows a standard procedure which you are most likely familiar with. As with everything we have tried to keep it as simple as possible. The next few steps show you what you will see with the installation wizard:





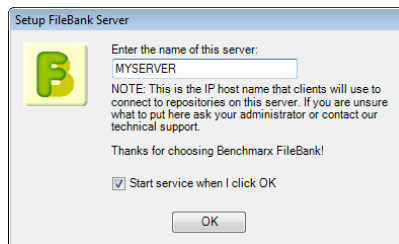
FileBank Quick Start Guide



Once you confirm that you wish to install FileBank the installation will proceed to copy the files into the location that you have specified. Once the installation completes you will need to perform some simple configuration steps before you can use FileBank.

Server Configuration

Once you have installed the FileBank service you will be prompted with a very simple configuration window into which you simply enter the server name as it will be referenced by clients.



Enter here the name of the server as it is known by the DNS system. If you are unsure about what this is you might need to ask your system administrator, or you can always contact us for help.



Client Configuration

The first time you run the FileBank client you will be asked to provide information about where the server is located. This is where you enter the name of the server that you entered in the server configuration window.



When you enter the server name FileBank will attempt to connect to the server to get a list of repositories. On first installation there will be no repositories so you will be prompted to create a new one. Simply click the **Create New Repository** button and you will be asked for a name for your repository.

The repository will then be created on the server and you should now be able to connect to that repository. FileBank will remember this setting and always connect to that repository by default. If you wish to change this or create new repositories you can do so easily, see the client reference for more information.

You are now ready to use FileBank! Remember, if you have any problems, questions or suggestions we would really like to hear them. You are already registered to use our forums so please feel free to post there.

Reminder: our website is at <http://www.benchmarkx.com/filebank/>

